



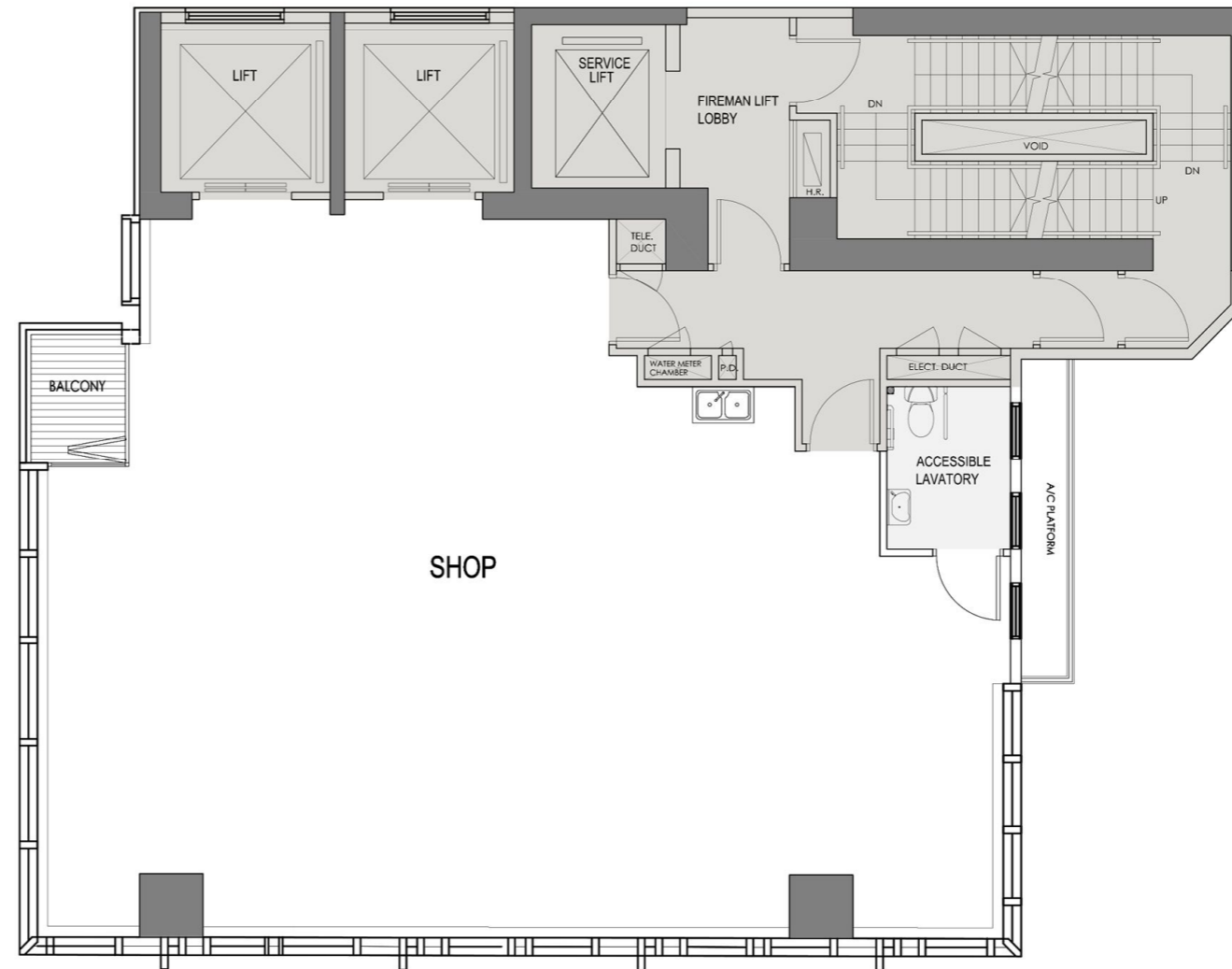
H DEVELOPMENT HOLDINGS LIMITED  
亨利發展控股有限公司

## Park Aura

54 Electric Road,  
Tin Hau,  
hong kong

typical floor floor plan  
(7F to 22F)

lettable area :  
134 sq.m. (1,442 sq.ft.)



for identification purposes only • subject to contract and availability