



H DEVELOPMENT HOLDINGS LIMITED

亨利發展控股有限公司

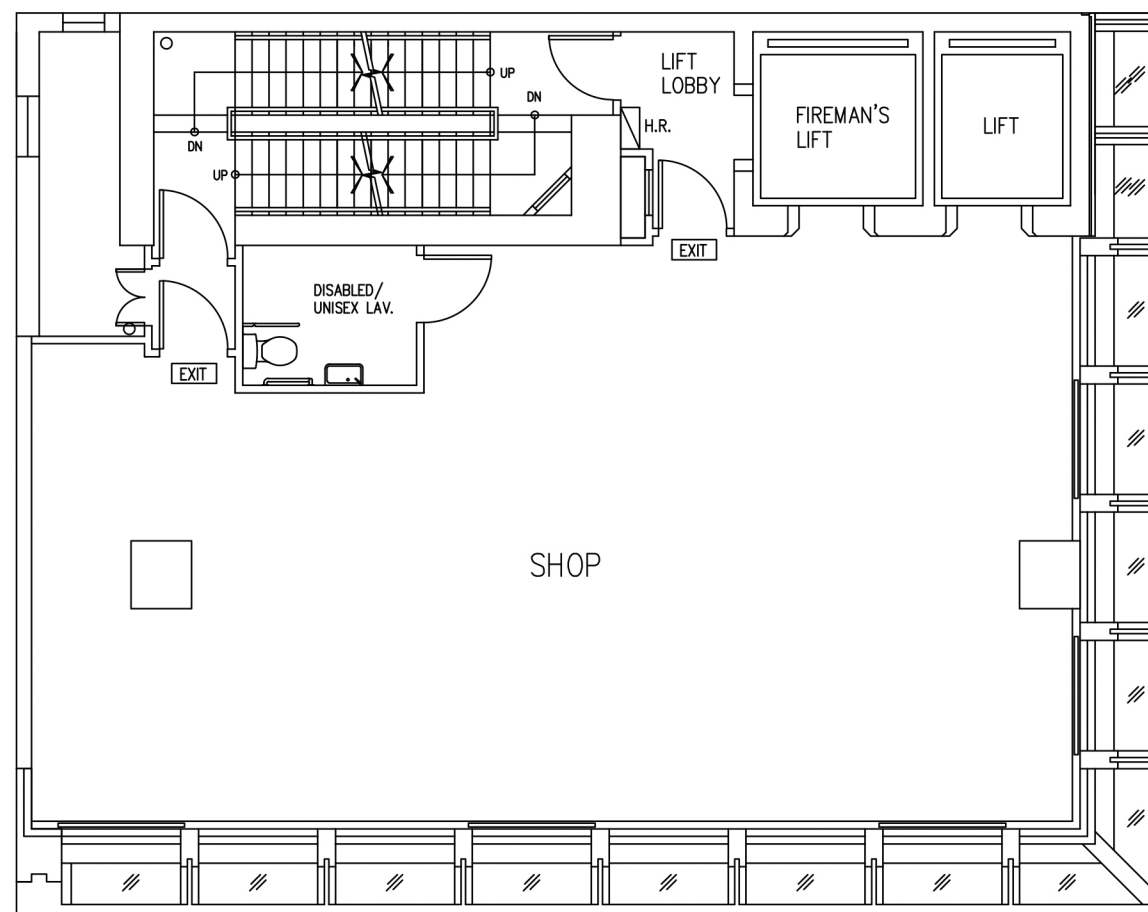
Tower Jordan

2-6 Bowring Street,
Jordan,
hong kong

1F floor plan

lettable area :
99 sq.m. (1,066 sq.ft.)

For Leasing Enquiries :
Call +852 3979 7028



for identification purposes only ▪ subject to contract and availability